

Monthly PTO Newsletter

December 2024

DLD/Spirit Day Recap 🐙🥢

A HUGE thank you to all who made it out to Sweet Octopus for Spirit Day!

We were able to raise **\$250!** These proceeds help the PTO provide things such as in-school field trips for students or lunches/gifts for teachers!



International Night Recap

Our second annual International Night was an incredible success, with more than 20 countries represented, showcasing the vibrant diversity within our community. The event was filled with engaging displays, performances, and delicious food from around the world, giving everyone the opportunity to experience new cultures firsthand. A heartfelt ✨THANK YOU✨ to all the volunteers who dedicated their time and effort to make the night special! Your hard work and enthusiasm allowed everyone to connect, learn, and enjoy the richness of global traditions!



"In diversity there is beauty and there is strength" - Maya Angelou



CONGRATS TO OUR RAFFLE WINNERS!

Here are the raffle winners from International Night.

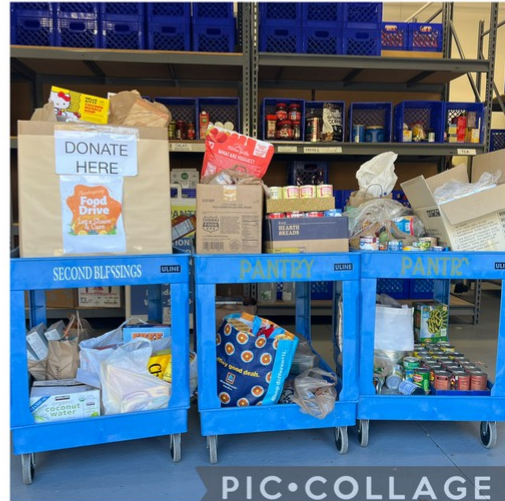
1. Songri-La Bakery 6in cake - **Mei Lin**

2. Phoenix Wellness Arts lessons - **Ethan Wang**
3. Big Hit Tennis lessons - **Faith Zheng**
4. Gift cards combo set (Vegreen, ManiBliss Organic Nail & Spa and Snackboxe Bistro - **Olivia Harbison**
5. Aussie Kids Golf Academy Johns Creek summer camp - **Frank Mahoney**
6. Gymnastics World of GA Johns Creek party package - **Crystal Minter**



THANKSGIVING FOOD DRIVE RECAP 🥫🍗

We are thrilled to share that we have successfully collected 677 pounds of donated food, cans and dried goods during our Thanksgiving Canned Food Drive. All the collected goods have been donated to **North Gwinnett Co-Op**. YHALE families, you are truly amazing!!! We want to extend our heartfelt thanks to everyone for your generous support of the Thanksgiving Food Drive!



NO SCHOOL: WINTER BREAK 🎄 🧑🏻

No school from December 23rd - January 6th!

Wishing you a happy holidays!!

Jokes are also on the house 🎁

How much did Santa pay for his sleigh?

Nothing. It was on the house.

YHALE ANNUAL FUNDRAISING CAMPAIGN

FEED OUR DRAGONS!

We have a few days left to donate towards YHALE's annual fundraising campaign! Our goal is \$65,000!

Click [here](#) to give today!



Annual Fundraising
FEED OUR DRAGONS
Now through Giving Tuesday (12/3)

OUR GOAL:
\$65,000

OUR FOCUS:

- Safety & Security

OUR NEEDS:

- \$10,000 - Panic button system for initial year & additional security training for our staff
- \$35,000 - Break area/ playground shading with added security hardware
- \$20,000 - Additional fencing and gates

WAYS TO GIVE:

- Online **NOW**
- By check payable to YHALE
- Sponsorship options available

SPONSORSHIP LEVELS

Are you or your business interested in becoming a YHALE sponsor?

Check the flyer for sponsorship options! For questions about sponsorships, email: marketing@yhale.org



SPONSORSHIP LEVELS

Platinum \$3000	<ul style="list-style-type: none">• Company advertisement in school yearbook• Company Logo on Children's Day t-shirts• Company logo on "Thanking Our Sponsors" banner• Special recognition monthly in our Principal Weekly newsletter• Social media exposure on YHALE social accounts
Gold \$2000	<ul style="list-style-type: none">• Company Logo on Children's Day t-shirts• Company logo on "Thanking Our Sponsors" banner• Special recognition monthly in our Principal Weekly newsletter• Social media exposure on YHALE social accounts
Silver \$1000	<ul style="list-style-type: none">• Company logo on "Thanking Our Sponsors" banner• Special recognition monthly in our Principal Weekly newsletter• Social media exposure on YHALE social accounts
Bronze \$500	<ul style="list-style-type: none">• Special recognition monthly in our Principal Weekly newsletter• Social media exposure on YHALE social accounts

Give online here: <https://givebutler.com/7n2mWJ>

If you have any questions or would like more information, please contact YHALE at marketing@yhale.org
www.yhale.org | 4550 River Green Pkwy, Duluth, GA 30096

SAVE THE DATE: LUNAR NEW YEAR

February 8, 2025 12:00 PM - 4:00 PM

Cultural engagement is a crucial part of the YHALE curriculum. Our annual Lunar New Year celebration provides an opportunity for students and the community to learn about one of the most important holidays in many East and Southeast Asian countries, including China, Vietnam, South Korea, Singapore, Malaysia, the Philippines, and Indonesia. Lunar New Year is known as the Spring Festival or Chūnjié (春节) in Mandarin, while Koreans call it Seollal (설날) and Vietnamese refer to it as Tết.



DECEMBER BIRTHDAYS

December 1 - Ms Dianna Lambert

December 2 - Ms Tiabin Xiong
December 2 - Ms Yarelis Rivera-Vanga
December 10 - Ms Junghee Yun
December 13 - Mr Changu Kang
December 14 - Ms Soyoung Kwon
December 16 - Ms Ji Hyun (Jennifer) Bae
December 17 - Ms Suchada Thepchatrri
December 27 - Ms Esther Suh
December 30 - Ms Yvonne Madison



JANUARY EVENTS

January 7 - School starts
January 17 - 100th day of school
January 20 - Martin Luther King Jr holiday, No school
January 29 - Lunar New Year, in-school celebration



Smore

Beautiful class updates in a snap

