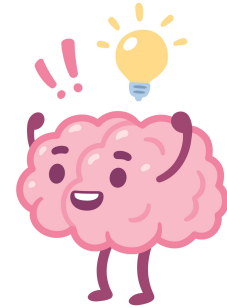




YI HWANG ACADEMY
of LANGUAGE EXCELLENCE

Gifted Informational Meeting

Diana Ung
Gifted Coordinator
September 16, 2025



This meeting is being recorded and will be shared.

Meet the Gifted Team



Diana Ung
Gifted Coordinator
Elementary Gifted
Teacher



Katelyn Lindsey
Middle School Gifted
Teacher

AGENDA

0

Introduction

1

0

Gifted Identification Process

2

0

Gifted Services

3

0

Q & A

4



01

Introduction



Who are Gifted Learners?



Gifted learners perform—or **have the capability** to perform—at higher levels compared to others of the same age, experience, and environment in **one or more domains**. They **require modifications** to their educational experiences to learn and realize their potential.

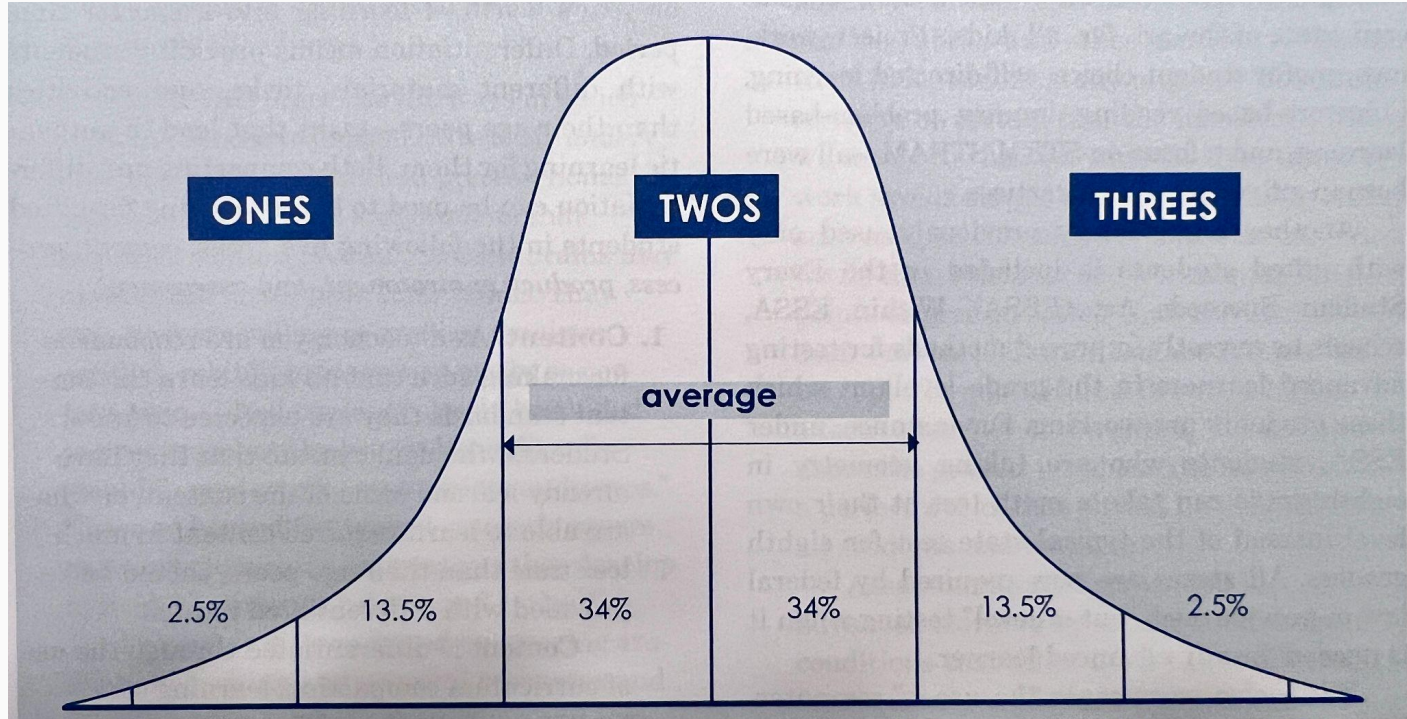
National Association for Gifted Children



What is Gifted?



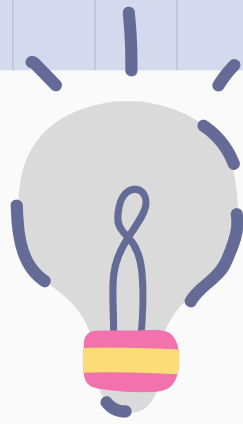
Gifted is a learning difference.



Common Traits of Gifted Learners

- Ability to comprehend material several grade levels above their age peers
- Strong sense of curiosity
- Enthusiastic about unique interests and topics
- Quirky or mature sense of humor
- Need support and guidance to develop socially and emotionally





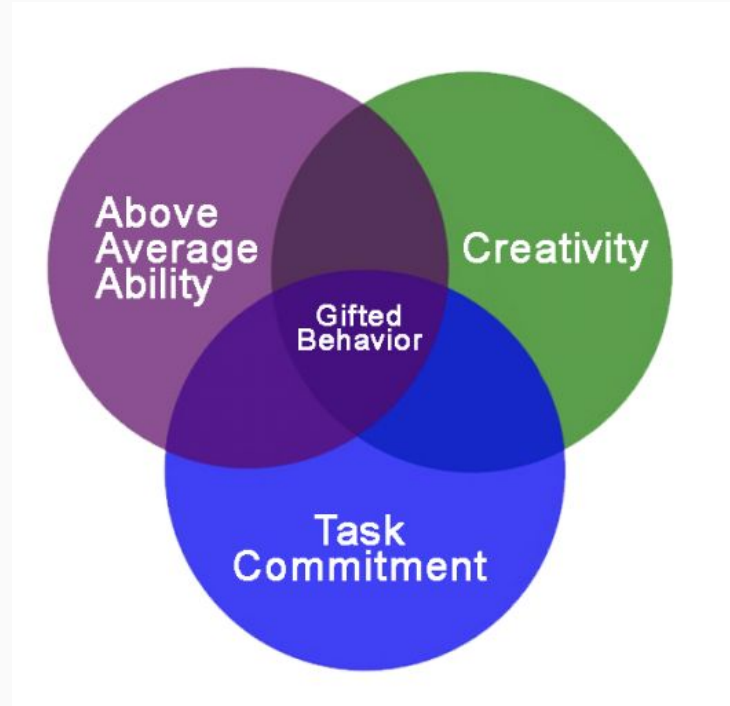
Gifted Identification Process



Four Categories of Gifted Eligibility



- Achievement
- Mental Ability
- Creativity
- Motivation



Two Ways to be Referred for Gifted Testing

Automatic Referral

First Semester Grades 2-7:

Fall MAP score in Reading OR
Math \geq 90th Percentile

Second Semester Grade 1:

Winter MAP score in Reading OR
Math \geq 90th Percentile

Reported Referral



A student is referred by a teacher, administrator or parent with knowledge of the student's academic abilities.

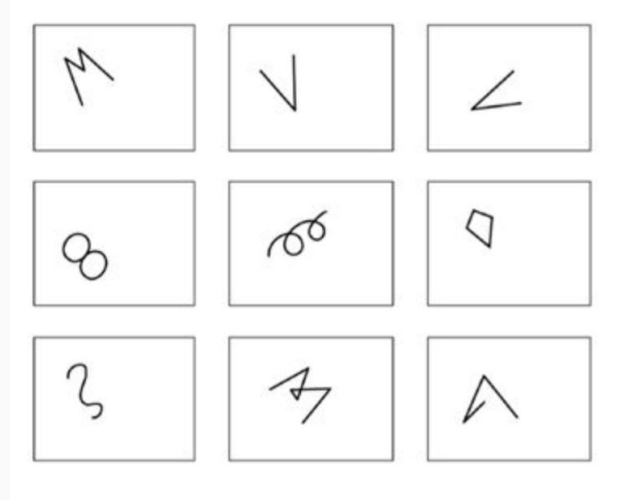
Mental Ability (Cognitive Abilities Test- CogAT)

- Measures reasoning and problem solving skills
- Three batteries- Each battery has three subtests
- Completed on the computer
- Qualifying Score: **1st-2nd: 99th percentile** , **3rd- 7th: ≥ 96th percentile**



Creativity (Torrance Tests of Creative Thinking- TTCT)

- The TTCT test is a series of figural exercises (thinking with pictures) that students do to showcase their creative abilities.
- Paper and pencil test
- Qualifying score: **≥90th percentile**



Motivation (Gifted Evaluation Scale- GES)

- The Gifted Evaluation Scale is a rating scale completed by 2 teachers who have known the student for at least one month.
 - Intellectual
 - Creativity
 - Specific Academic Aptitude
 - Leadership Ability
 - Performing & Visual Arts
- Qualifying score: **≥90th percentile**

Two Ways to be Eligible for Gifted Services

Psychometric

Qualifying score in both mental ability and achievement

Mental Ability

Grades 1 & 2: **99th percentile** composite score on CogAT

Grades 3-7: **≥96th percentile** composite on CogAT

Achievement

≥90th percentile in MAP Reading OR Math

Multiple Criteria

Qualifying score in 3 out of 4 categories

Mental Ability

Grades 1-7: **≥96th percentile** composite or component score on CogAt

Creativity

≥90th percentile composite on TTCT

Motivation

≥90th percentile composite on GES

Achievement

≥90th percentile in MAP Reading OR Math

Timeline of Eligibility Process (Grades 2-7)

Referral and Consent	Testing Period	Eligibility Results	Services Begin
September	October- November	December	January

Note: Test Scores are valid for 2 years

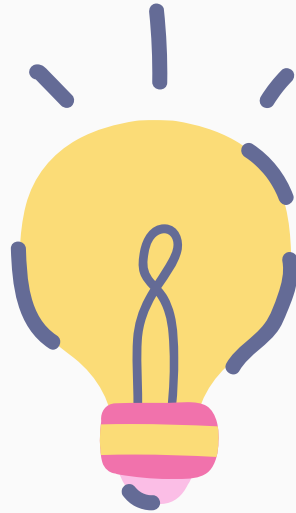
Timeline of Eligibility Process (Grades 1)

Referral and Consent	Testing Period	Eligibility Results	Services Begin
January-February	March-April	May	August (Grade 2)

Note: Test Scores are valid for 2 years

03

Gifted Services



Resource Room / Cluster Model

All gifted students must be served at least 5 segments (45 minute periods) a week.

Grades 2-5 Resource Room (Ms. Ung)- Students will attend Gifted class once a week from 9:30AM-2:30PM. They will join their classmates for lunch and recess. Students will focus on interdisciplinary enrichment activities.

Middle School Cluster Model/Resource Room (Ms. Lindsey)- Students are grouped together and receive advanced content and enrichment using differentiated teaching strategies. Students will also meet once a week for a resource class.

What do we do in Gifted?

- We will explore students' interests and passions.
- We will challenge students to think with more depth and complexity.
- We will advance students' skills in creativity, problem solving, communication and collaboration.
- We will support students' social-emotional needs.

Resource Room Model

- Units of Study
- Project Based Learning
- Vocabulary Development- Greek and Latin Roots
- Math- Hands on Equations
- Problem solving games
- Makerspace
- Social-Emotional Learning

Cluster Model

- Create **Tiered** Assignments
- Allow Gifted Students to **Work at Their Own Pace**
- Offer **Open-Ended** or **Self-Directed** Assignments & Activities
- **Compact** the Curriculum
- Deliver **Project-Based Learning**
- **Pair Gifted Students Up**

Assessment

- Students do not receive a traditional grade for gifted class. Students will be assessed using rubrics, self-assessments and teacher observations.
- A gifted progress report will be sent home at the end of each semester. These reports give feedback on the the following standards: critical thinking, communication, problem solving, creativity and social emotional learning.

Resources

- [2025-26 GaDOE Resource Manual for Gifted Education Services](#)
- [GA Gifted Education Referral and Eligibility Process Chart](#)
- [National Association for Gifted Children](#)
- [GA Association for Gifted Children](#)

Q & A

Diana Ung- dhu@yhale.org
Katelyn Lindsey- klindsey@yhale.org