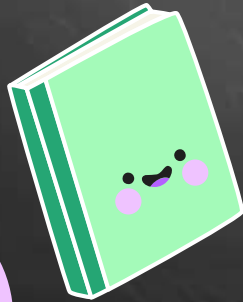


Curriculum Night 2024

Ms. Lindsey & Mr. Hong
YHALE Rooms 326 and 327



Some information about the teachers



Mr. Hong



Math and Science

Loves to be athletic
Plays music
Cooks for fun



Ms. Lindsey

ELA and Social Studies

Home Cook
Music lover
Animal Lover



Tonight's Schedule



Session 1

6:00-6:30 PM

ELA, Math,
Science, and
Social Studies
Class

Session 2

6:40-7:10 PM

Dual Language
Immersion
Classes



Teacher Contacts

Ms. Katelyn Lindsey
Email: klindsey@yhale.org

Mr. Josh Hong
Email: jhong@yhale.org

Classroom Schedules



8:30 - 9:25 AM

ELA

9:25 - 10:20 AM

S.S. M/W, SCIT/R/F

10:20 - 11:15 AM

Target Language

11:15 - 12:10 PM

DLI Literacy

12:10 - 1:10 PM

Recess/Lunch

1:10 - 2:05 PM

Math

2:05 - 3:00 PM

Connections

3:00 to 3:55 PM

Dragon PRIDE



Check YHALE calendar for future events



August 2023



Attendanc

Taken every morning @
8:45 AM



Tardies/Absen

Updated accordingly on
InfiniteCampus by Ms.
Hadassah Beloved
hbeloved@yhale.org.
& attendance@yhale.org

ces

Su	Mo	Tu	We	Th	Fr	Sa
					01	02
03	04	05	06	07	08	09
10	11	12	13	14	15	16
17	18	19	20	21	22	23
24	25	26	27	28	29	30
31						



Student Expectations

At School:

- Learn and Grow
- Be respectful, responsible, and a problem solver
- Bring bookbag and items back home

At Home:

- Do homework
- Check Google Classroom for Agenda
- Get plenty of rest and sleep
- Bring bookbag & items back to school

Grading Scale

Grade 2-6	A: Excellent Progress; $\geq 90\%$.
	B: Above Average Progress; $\geq 80\%$.
	C: Average Progress; $\geq 70\%$.
	F: Unsatisfactory Progress failure of acceptable progress; Below 70%

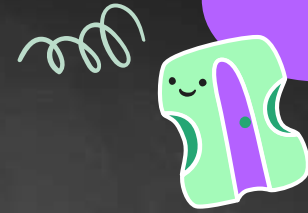
Grading Categories

Grade 6	20 % Formative Assessment	Assessment during learning
	25 % Summative Assessment	End of unit or end of skill/topic assessment
	20 % Classwork	Product of learning - guided, independent, or group practice.
	20 % Participation	Process of learning - Approaches to learning skills, preparedness for class, active participation in tasks/discussions/assignments/etc.
	15 % Homework & Study Habits	Completion of homework and submission on time with quality

Gifted Inclusion Classroom

“Research indicates that the needs of students who are gifted **can be met** in the inclusive classroom under certain prerequisite conditions; for example, (1) the students are **appropriately grouped in clusters** or other homogeneous arrangement; (2) teachers **match their instructional strategies to the specific learning needs** of the students; (3) the students receive an appropriately **differentiated curriculum** or have access to the full range of curriculum.”

- <https://www.hoagiesgifted.org/eric/faq/gt-inclu.html>



1. Create **Tiered** Assignments

2. Allow Gifted Students to **Work at Their Own**

Pace

3. Offer **Open-Ended** or **Self-Directed**
Assignments & Activities

4. **Compact** the Curriculum

5. Deliver **Project-Based Learning**

6. **Pair Gifted Students Up**

- <https://www.hmhco.com/blog/differentiated-instruction-for-gifted-students>





Standards

ELA / S.S. / MATH / SCIENCE



Parent Expectations

- Check Google Classroom with students for update on upcoming and current assignments
- Ask questions about their day
- Homework/skill practice
- Foster a love for lifelong learning





Benefits of DLI

1. Greater cognitive flexibility
2. Spirit of openness and respect for others
3. Better standardized test scores
4. Access to a wider range of jobs

YHALE Website



Assessments

MAP Growth is designed to measure student achievement in the moment and growth over time.

MAP



Classwork, homework, and other assignments determined by the instructor are crafted to introduce and develop concepts throughout the curriculum over the course of the semester

Summative Assessment



IXL helps teachers to specialize their approach to individual students by providing feedback on students strengths and weaknesses with different concepts, helping to determine what needs to be reviewed in class

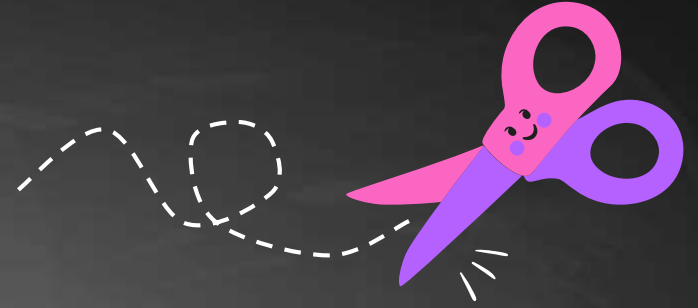
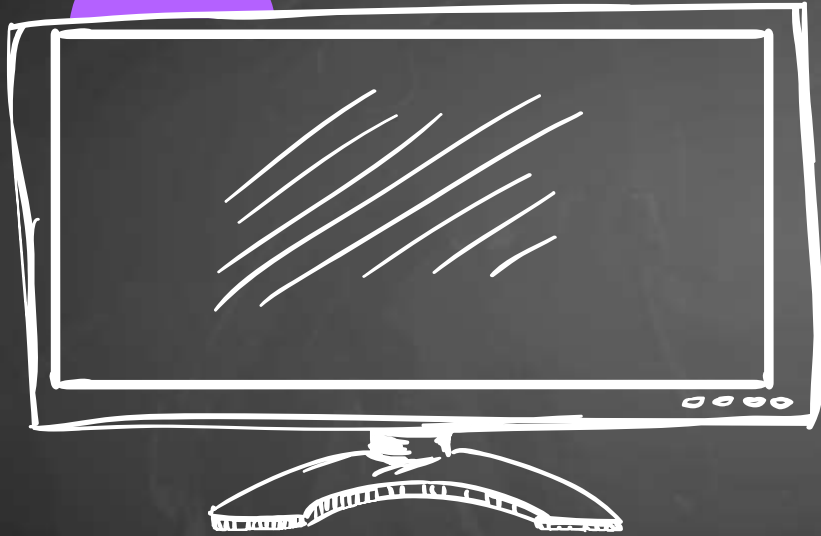
IXL



ELA/S.S./Math/Science classroom assessments are given to collect data, drive instruction, and provide grades on student progress.

Formative Assessment





Online Resources

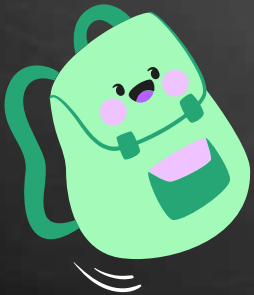
- Google Classroom
- IXL
- Amplify





Class Dojo

Please check messages, announcements, and student profiles to keep updated on behavior, homework, and the overall day.



Teamwork!



Thank you for all of the support and effort put towards your child's education.

CREDITS: This presentation template was created by **Slidesgo**, including icon by **Flaticon**, and infographics & images from **Freepik**



